

MOVEMENT SPECIFICATIONS
CAL. 6NXX BY CITIZEN WATCH CO., LTD. JAPAN
WITH ELECTRO-LUMINESCENT UNIT
13 LIGNE QUARTZ . NO (O) JEWEL

1. BASIC SPECIFICATIONS

(1) CAL. NO.

	6N30	6N10	6N00
Size (mm)	28.80 Φ		
Total thickness	3.55 (mm) *1.	4.30 (mm) *1.	
Hands	3		
Date	×	○	○
Day	×	×	○
Battery life	Approx. 2 years *2.		

- 9 JUN 1985

*1. Including dial.

*2. Two years for customer's normal use based upon
5 sec/day for E/L(Electro-Luminescent unit).

(2) Time standard

Type of oscillator: Tuning fork type quartz crystal
 Oscillator : 32,768 Hz
 Accuracy : ± 20 sec/month worn under normal circumstances

(3) Battery

Type of battery : Silver oxide SR621W or equivalent

(4) Others

Driving systems : Two-pole stepping motor
 Jewel : No jewels

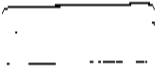
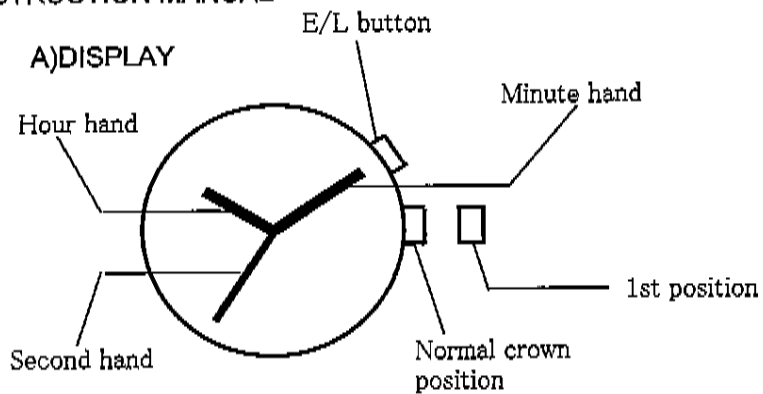
(5) Additional mechanisms

Second hand stopping at optional position
 Power conservation switch

(6) Balanceable weight of hands

Minute hand	Max. 40 mg-mm
Second hand	Max. 7 mg-mm

Note: Please make sure to use transparent dial (which is supplied with mov't) over the E/L plate on mov't, and please never print directly on the E/L plate, as the printing directly on E/L plate may infringe the third party's patent.

INSTRUCTION MANUAL FOR MIYOTA WATCH MOVEMENT**INSTRUCTION MANUAL****B) SETTING THE TIME**

1. Pull the crown out to the 1st position.
2. Turn the crown to set hour and minute hands.
3. When the crown is pushed back to the normal position, second hand begins to run.

C) OPERATING E/L (ELECTROLUMINESCENT) UNIT

1. Press the E/L button and the E/L turns on.
2. E/L unit automatically turns off 1second after the button is released.

2. SEPARATED PARTS

Setting stem (x 1)	065 - 379
Transparent dial(x 1)	311 - 010 (6N10)
	311 - 030 (6N30)
	311 - 070 (6N00)

(1) Setting stem

065 - 379

Length of movement center to stem end --- 20.03 mm

Thread 0.9Φmm × 12.18 mm

(2) Transparent dial

311 - 010 (6N10)

311 - 030 (6N30)

311 - 070 (6N00)

Any of customer's Logo, Brand name, Marks and index etc. must be printed on the Transparent dial. Due to the potential infringement of E/L patent, never print directly on the surface of Electro-Luminescent plate.

3. Measurement of time rate

The unit of measurement must be set at "10 sec." or an integer-fold value of 10 sec. owing to the DFC system. And the measurement must be carried out in a state of a complete watch.

4. Marking on movement

UNADJUSTED NO JEWELS
SNXX
MIYOTA CO. JAPAN

5. Typical clearance

Between case and movement

Battery strap - Case back : Typical 150 μ (without battery strap)
Hand - glass : 300 μ ~ 450 μ
Depend on Hand length

6. Operating of Electroluminescent (E/L) Unit



P.B.1

1. Depress P.B.1 to E/L on.
2. E/L Unit auto-matically turned off 1 sec after PB 1 was released.

Note: The position of PB(push button) can be set either at 2 o'clock or at 4 o'clock.

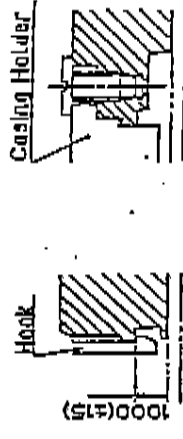
※ The specifications might be changed without previous notice.

Mark Coordinates

Mark	X	Y	R	Mark	X	Y
b1	9581	6360	150	DH5	-8759	6900
b2	7928	8331	150	DH6	8251	-7500
b3	-5773	9948	150	BT	5500	1100
b4	-7839	8415	150			
b5	-9572	-6374	150	d1	2351	11100
b6	-7916	-8342	150	d2	10800	3490
b7	9198	-6908	150	d3	10800	-3490
b8	10501	-4690	150	d4	3490	-10800
				d5	-2700	-11100
				d6	-10800	-3490
				d7	-10800	3490
				d8	-3490	10800
				d9	-6389	-10216
				d10	7235	9131
				CS1	7531	7531
				CS2	6273	-8607
				CS3	-7631	-7631
				CS4	-6886	9125

With Battery strap	3600
Without Battery strap	3450

Hook of Casing Holder

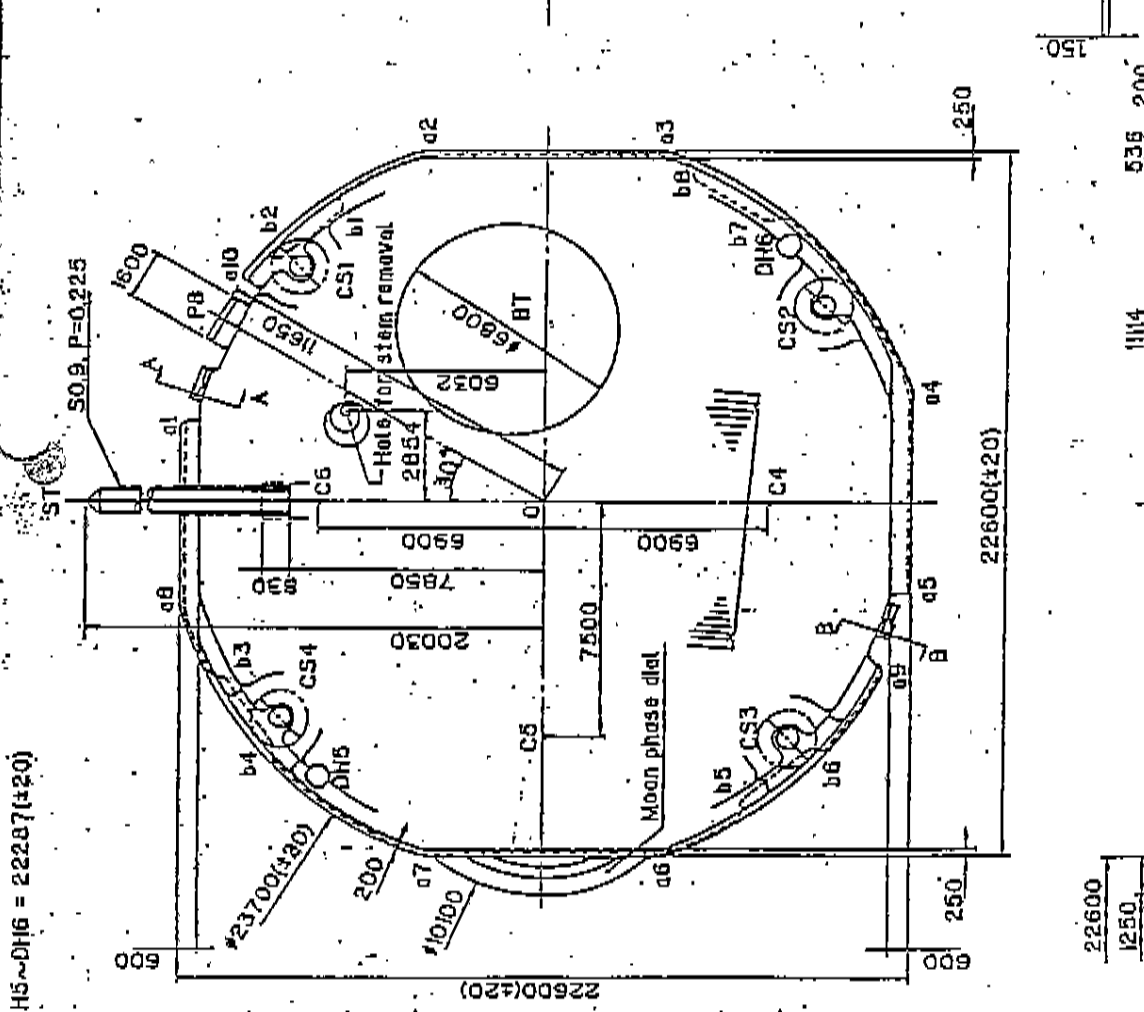


Section b1-b4

Section C51-4

Unit	1/1000mm
Scale	
Quantity	
Material	
Heat	
Treatment	
Hardness	
Plating	
General tolerances	
Dimension	

Mark	Date	Description	Appr.
		Alterations	
Drawn		Name	
Checked			



DH5~DH6 = 22287(±20)

S0.9, P=0.225

Holes for stem removal

Moon phase dial

Push button

Moon phase dial

Section A-A (B-B)

